

WE EXTEND A CORDIAL INVITATION TO THE PUBLIC  
TO VISIT THE CEMETERY AT ANY TIME

For any further information that may be desired  
we would appreciate your call

PHONE 636-677-7229

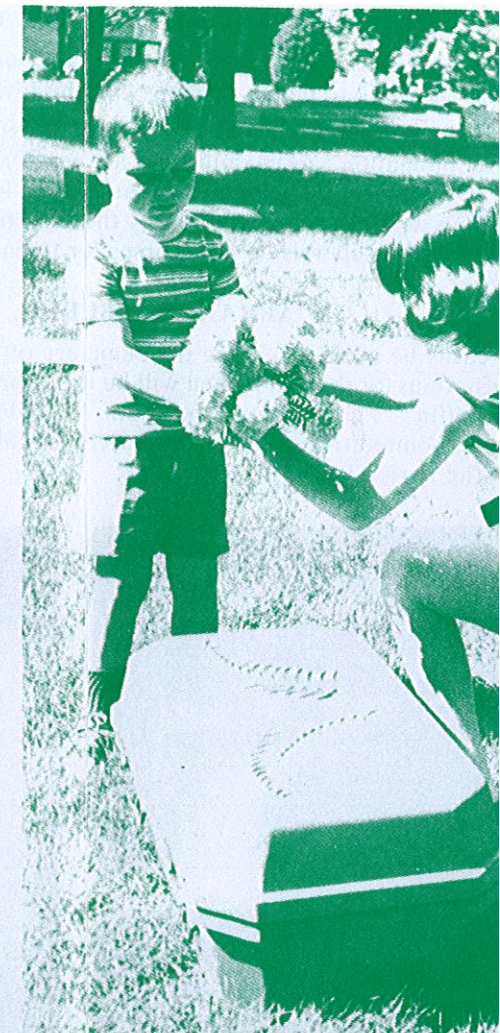
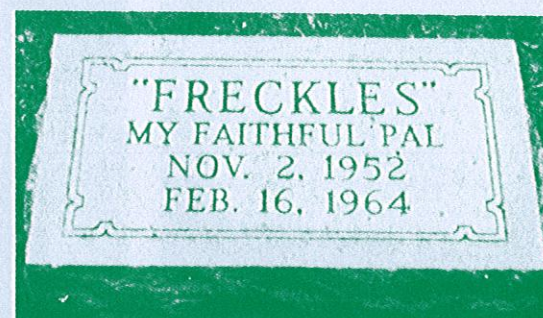
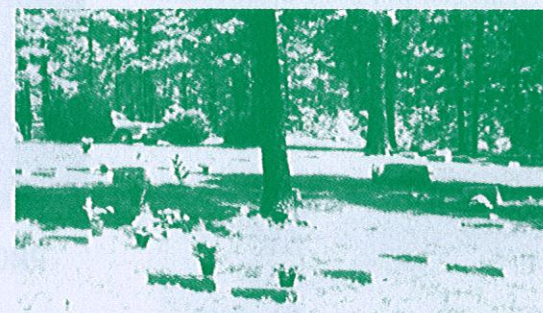
## MEMORY PARK *Pet Cemetery*

1457 Boly Lane (cemetery)  
P.O. Box 771 (mailing)  
Manchester, MO 63011  
314.576.3030

"A permanent resting place for faithful pets"

# MEMORY PARK *Pet* CEMETERY

THE MOST BEAUTIFUL  
BURIAL GROUNDS  
IN MISSOURI



A water tight combination cask  
provides complete protection for

### A PLACE OF BEAUTY AND QUIET

Memory Park Pet Cemetery is situated two miles west of Kirkwood. It was established with enough acreage for 45,000 burial sites and sufficient space has been provided to 200 years. All manner of pets are buried here: dogs, cats, parakeets, rabbits, monk etc. Many blue blooded prize winners who made bench show history in their time, lie with those who boasted no pedigree, for the place is purely democratic.

The cemetery was surveyed and graves laid out in an orderly manner with walks, large and evergreens. Comfortable benches on which to rest are scattered about the center. Beautiful granite monuments surmount many of the graves, and the profusion of flowers evident, testify that loving masters and mistresses "Remember Them".

The cemetery lies on a gently sloping hill and no more beautiful spot could be found to rest your faithful friend when his day is over.



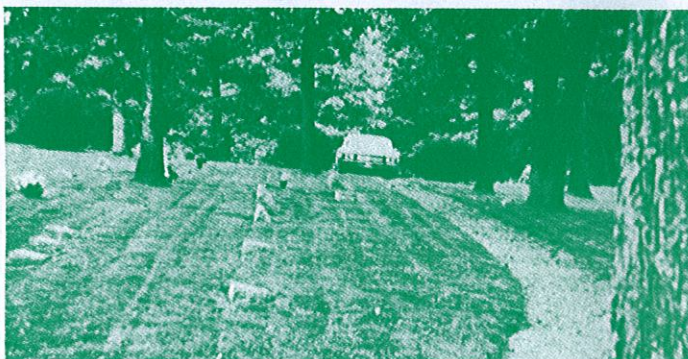
## WHEN THE LAST SAD PARTING COMES

When the last sad parting comes, and your pet leaves you for that unknown journey, your loneliness will be easier to bear if you have laid him to rest in keeping with the love you felt for him when he was alive.

Memory Park offers a complete burial service for all varieties of pets. Individual padded coffins are provided for regular burials. Combination casket-vaults that are water tight and air tight can be arranged for according to your wishes. Each grave is identified by a numbered lot marker and small granite markers to large monuments of various designs can be provided by the cemetery management. The burial grounds and adjacent properties are under supervision at all times for maintenance and operation.

### TO ARRANGE A BURIAL

Burial arrangements can easily be made by calling the cemetery office. This call will bring an attendant to your home or the veterinarians for the pet. It then will be transported back to the cemetery and placed gently in a satin-padded coffin . . . in a sleeping position. An individual lot, 2 x 4 foot in size, will be assigned to you and at an appointed time, the burial service will take place. The owner and family may view the pet and witness the burial, if they so desire.



Persons well known in the sport and entertainment world have their pets buried here



### REGULAR BURIAL SERVICES

- 2' x 4' Lot
- Pick-up of Pet in unmarked vehicle
- Padded Coffin
- Opening & Closing of grave
- Numbered Lot Marker
- Burial Certificate

### Other Services Available

- Casket-Vault Combinations
- Granite Markers and Monuments

### CREMATION

PHONE 636-677-7229

## A tug at the HEARTSTRINGS



A tattered old bedroom slipper, a once cherished ball lying still beside a padded box. They are mute reminders of a great and loyal heart that is stilled forever. That furry little body, that wiggled in ecstasy or drooped in sorrow at your slightest word . . . where is it today? Too often, the owner of a pet that has gone forward to his own little heaven has made no provision for a suitable burial place.

## PRE-NEED ARRANGEMENTS

None of us like to think of the day when we have to give up our beloved pet. But we know that the time will come and we must be prepared. It is to your advantage to select a plot to bury your pet in advance. Then you will have your mind made up when the time comes, and we will be glad to set a plot for your pet that are available.

You may reserve a single lot for one interment, or a larger lot containing space for two or more.

### BURIAL CERTIFICATE

At the time of burial, the owner will receive a Burial Certificate, assigning Rights to him in a particular plot in the cemetery. These Burial Certificates are given with the owner and his heirs, and are subject to the Rules and Regulations of the cemetery.



Large "family plots" are available

